

Mud crab species identification and data collection activity

Target species

Scylla serrata

Mud Crab / Mangrove Crab

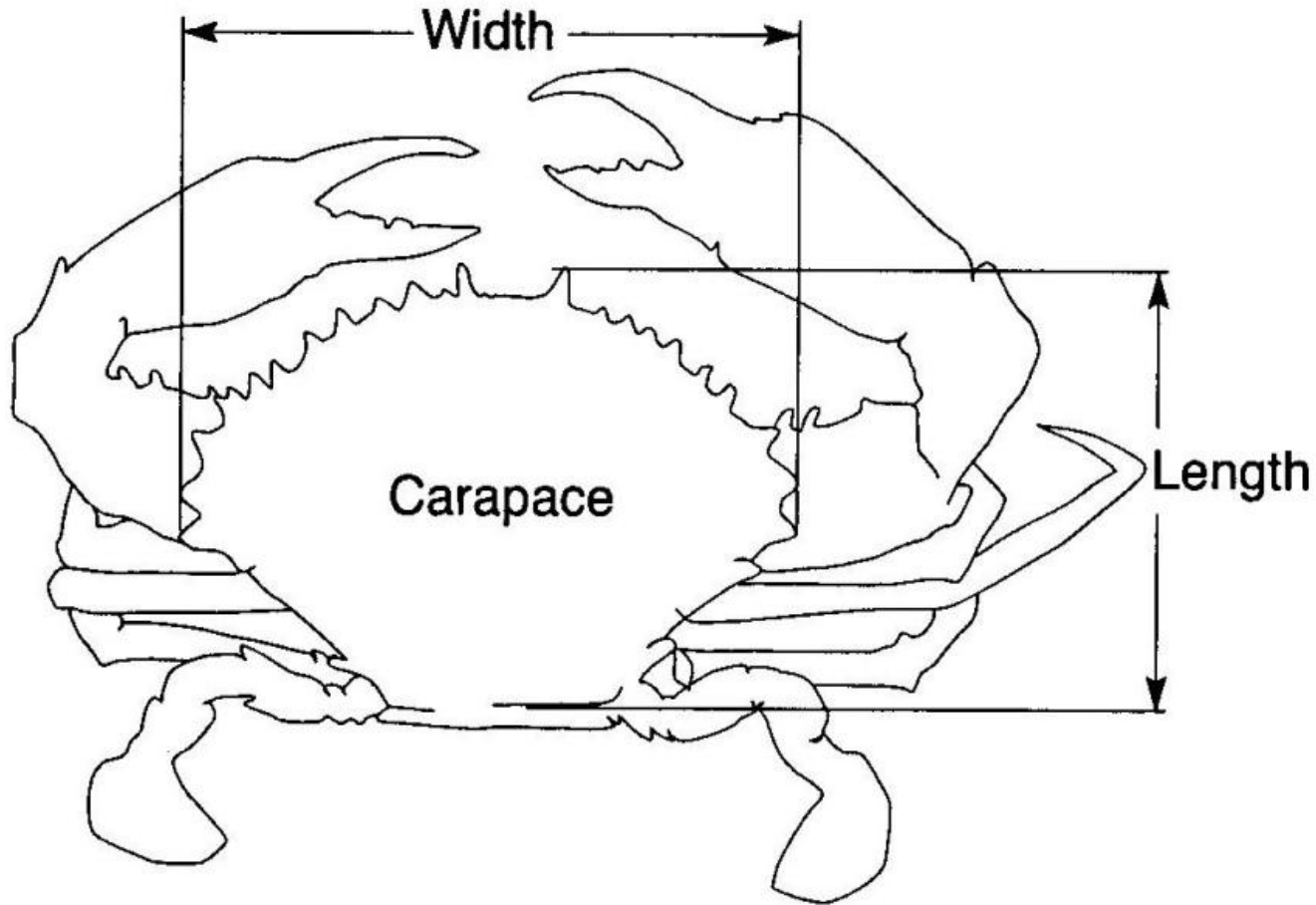


www.seafdec.org.ph

Description

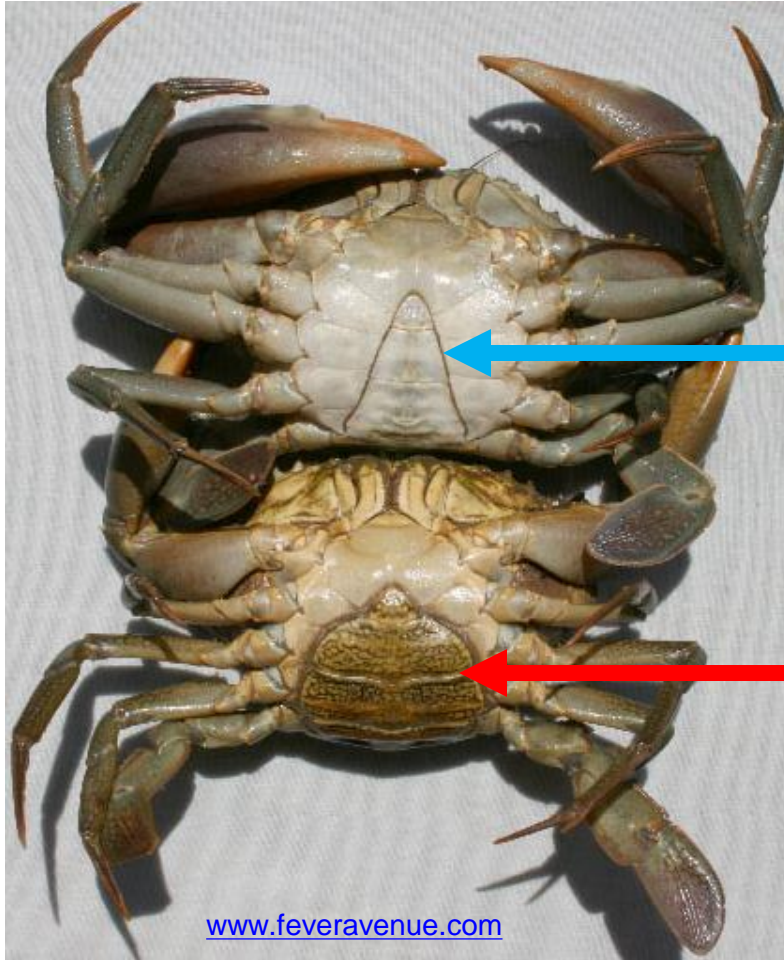
- Portunid crab – fourth pair of legs flattened into paddle-like structures, for swimming
- Smooth oval-shaped carapace, dorsal shell usually a dark olive/brown
- Visible H-shaped groove
- Large strong claws
- Nine sharp spines along margins of dorsal shell and on joints of legs
- Grow to 25-28cm, 15-20cm more common

Carapace width



- Measure carapace width to the nearest mm, i.e. 15,5cm recorded as 155mm

Male vs Female

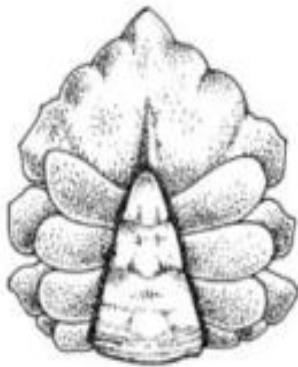


Male

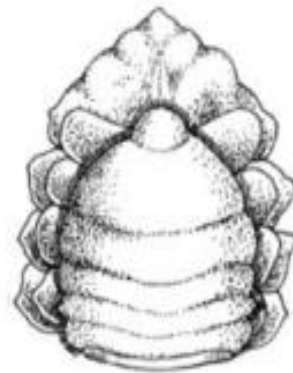
Female

Maturity level

a)



b)



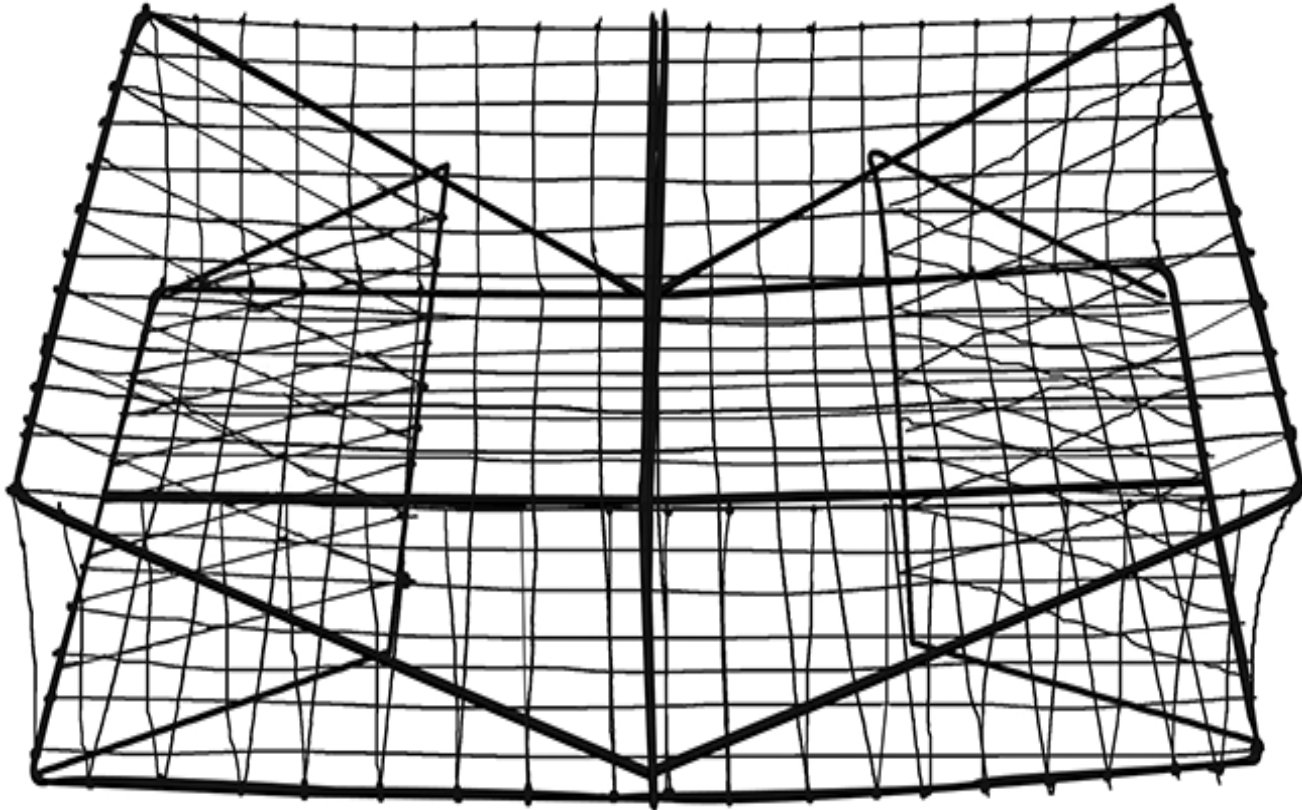
c)



Source: Reprinted with permission of SEAFDEC.

Abdomens of (a) immature, (b) mature female and (c) mature male *Scylla serrata*

Collapsible traps / Bubu



- Baited with eel or other fish